

Faculty Seminars in Online Teaching



Extending the Efficacy of the Learning Management System: Integrating Tools to Enhance Learning Online

Center for
Distributed Learning

Agenda

- Overview of Integrations and LTIs
- Examples at UCF
- Faculty role and experience
- Resources



Integration and LTI Overview

John Raible
Instructional Designer
Center for Distributed Learning

Center for
Distributed Learning



**“Technology is
anything that
wasn’t around when
you were born.”
–Alan Kay**

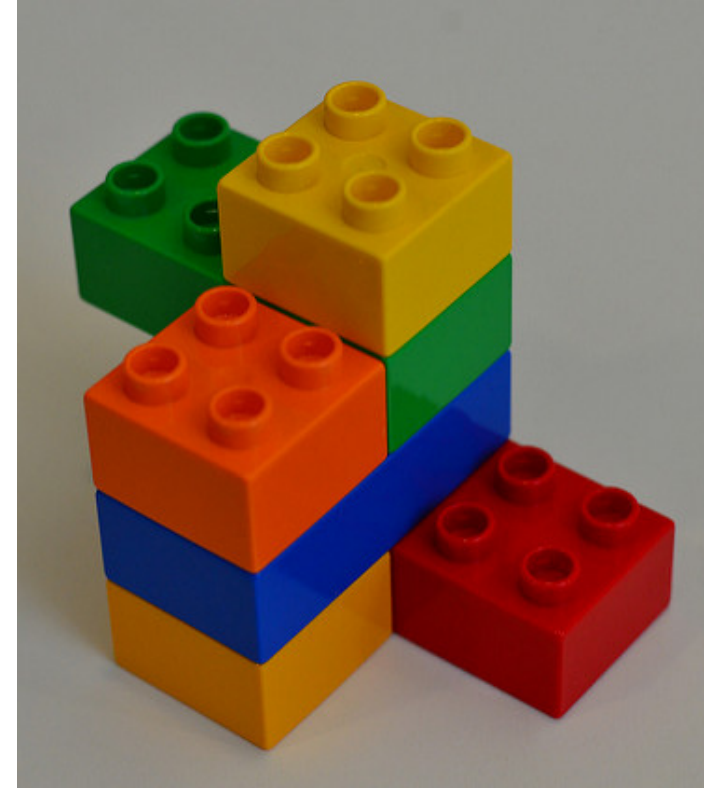
Learning Management System

- Collection of individual tools
 - WebCT = Web Classroom Tools
- A “walled garden”
- 99% of colleges and universities have an LMS
 - Brown, Dehoney, & Millichap (2015)
- Recent push expand beyond walled garden

Next Generation Digital Learning Environment

- Digital confederation of components like a smartphone
- Core functionality: interoperability and integration
- Example: an e-book application with a course syllabus and a separate quizzing tool, all of which could smoothly exchange data

(Brown, Dehoney, & Millichap, 2015)



[“Lego Blocks”](#) by Dasgupta, Sayamindu is licensed under CC BY-SA 2.0



“Mr. Potato Head and Friends” by Ian Muttou is licensed under CC SA 2.0

When we say Integrations

- Learning Tool Interoperability (LTI)
- Set of standards that allow various technologies to talk to one another
- Maintained by IMS Global Learning Consortium
- UCF is a member

Types of Integrations

- Content
- Communication
- Assessment
 - Practice
 - Graded

Most Commonly Integrations Used at UCF

- YouTube
- Twitter
- Library Quicksearch
- Dropbox
- Pearson Mylabs

Selecting the Appropriate Integration

- Start with learning objectives
- Search integration catalog
- Determine how to add to course
- Test from student perspective
- Collect feedback



Faculty Role and Experience

Amanda Groff, PhD
Associate Lecturer,
Department of Anthropology
College of Sciences

Center for
Distributed Learning



Content Tools: Library Quicksearch

World > Assignm Quicksearch Lite

QuickSearch Lite

Embed full text articles and videos into your course...

Search Databases, Articles, and Catalog

Keyword Author Title Video

University of Central Florida | Center for Distributed Learning | UCF Libraries
© 2013 - 2017

*Does not search all library resources.

Content Tools: Google Maps

Module 3 Important Maps/Lithics Reference



Content Tools: YouTube Embed

These youtube clips are really great! I suggest watching all of them.

Example of Howler Monkey call:

<http://www.youtube.com/watch?v=UdnwLX5m3G8> ↗



Example of Brachiation:

<http://www.youtube.com/watch?v=lbMCyrc16t4> ↗



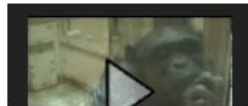
Example of Tool Use:

http://www.youtube.com/watch?v=juWNZGSW-_M ↗



Example of Communication:

<http://www.youtube.com/watch?v=mmOOdalnn4I> ↗



Accessibility Tools: Quiz Extensions

Quiz Extensions

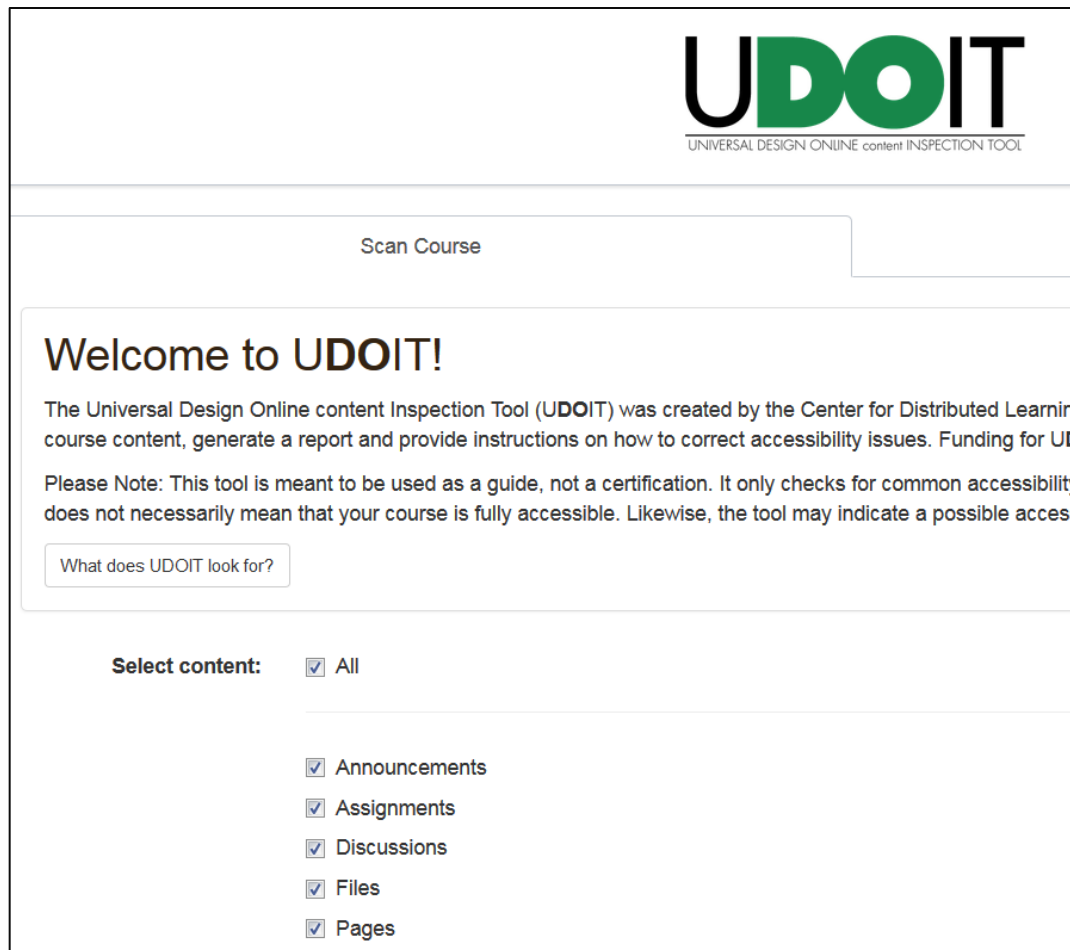
This tool will apply extra time to **all existing** quizzes/exams. For example, Suzy Johnson and Stephen Smith need double time. Select the students below and choose the appropriate amount of extra time e.g., double (2x).

If additional quizzes/exams are added during the semester, a message will appear below stating there are new quizzes which need extensions. Click the **Apply Now** link to add the same extensions.

Student Name	Selected Students
<input type="checkbox"/> , Emily	<input checked="" type="checkbox"/> , Audrey
<input type="checkbox"/> , Mercy	<input type="checkbox"/> , Faiza
<input type="checkbox"/> , Diego	
<input type="checkbox"/> , Audrey	
<input type="checkbox"/> , Brandon	
<input type="checkbox"/> , Caitlin	
<input type="checkbox"/> , Faiza	
<input type="checkbox"/> , John	
<input type="checkbox"/> , Briana	
<input type="checkbox"/> , Nichole	

Page 1 of 11

Accessibility Tools: UDOIT Course Accessibility Inspection



UDOIT
UNIVERSAL DESIGN ONLINE content INSPECTION TOOL

Scan Course

Welcome to UDOIT!

The Universal Design Online content Inspection Tool (UDOIT) was created by the Center for Distributed Learning to help instructors scan course content, generate a report and provide instructions on how to correct accessibility issues. Funding for UDOIT is provided by the State of Florida.

Please Note: This tool is meant to be used as a guide, not a certification. It only checks for common accessibility issues. The absence of errors does not necessarily mean that your course is fully accessible. Likewise, the tool may indicate a possible accessibility issue that is not a problem.

What does UDOIT look for?

Select content:

- All
- Announcements
- Assignments
- Discussions
- Files
- Pages

Communication Tools: Twitter Widget

Anth 3302
Sex, Gender & Culture
Department of Anthropology College of Sciences University of Central Florida

Dr. Amanda Groff

profgroffsgc

Amanda Groff @ProfGroffSGC 10d
Don't forget that Modules 5 and 6 are closing tonight. Good luck!

MODULES SYLLABUS

SCHEDULE ONLINE SUPPORT

Communication Tools: Action Icons



Discussion Post

Post a short introductory message under 'Introduce Yourself' in the 'Discussions' tab found personal information. This posting is to help you find people with common interests that yo

Discussion posts are NOT to be used to discuss quiz questions or test questions! If you ha



Internet Search

Using a search engine of your choice, find a web site concerning a cultural group's magic, c pick one that is different from your fellow students.



Getting Started Internet Assignment (5 points)

Click on the "Discussions" link in the course tools menu. Under the Getting Started Internet annotation (a basic description/why it is useful) of the web site. Your annotation must be a comments. Make sure you post this under the Getting Starting Internet topic! **This collecti**

Future Integrations?

Activity by Date

Date	Page Views	Actions Taken
2017-03-06	366	4
2017-03-05	585	12
2017-03-04	372	7
2017-03-03	675	8
2017-03-02	425	6
2017-03-01	373	4
2017-02-28	254	4
2017-02-27	481	1
2017-02-26	155	1
2017-02-25	2106	117
2017-02-24	3313	132
2017-02-23	1411	44

Student Tracking: More details needed

A golden statue of a knight on a horse, with a shield featuring the letters 'UCF'. The background is a solid yellow color.

Available Support and Resources

Center for Distributed Learning

Center for
Distributed Learning



Resources

- <http://dl.ucf.edu/lms>
 - Curious about integrations?
 - Request an integration
 - Additional resources

References

- Brown, M., Dehoney, J., & Millichap, N. (2015). What's next for the LMS?. *Educause Review*, 50(4), 40-51. Retrieved from <http://er.educause.edu/articles/2015/6/whats-next-for-the-lms>
- Demski, J. (2012). Rebuilding the LMS for the 21st Century. *Campus Technology*. Retrieved from <https://campustechnology.com/articles/2012/03/29/rebuilding-the-lms-for-the-21st-century.aspx>
- Educause Learning Initiative. (2012). 7 things you should know about learning tools interoperability. Retrieved from <https://net.educause.edu/ir/library/pdf/ELI7099.pdf>

Amanda Groff, PhD
Amanda.Groff@ucf.edu

John Raible, MA
John.Raible@ucf.edu



Center for
Distributed Learning

